

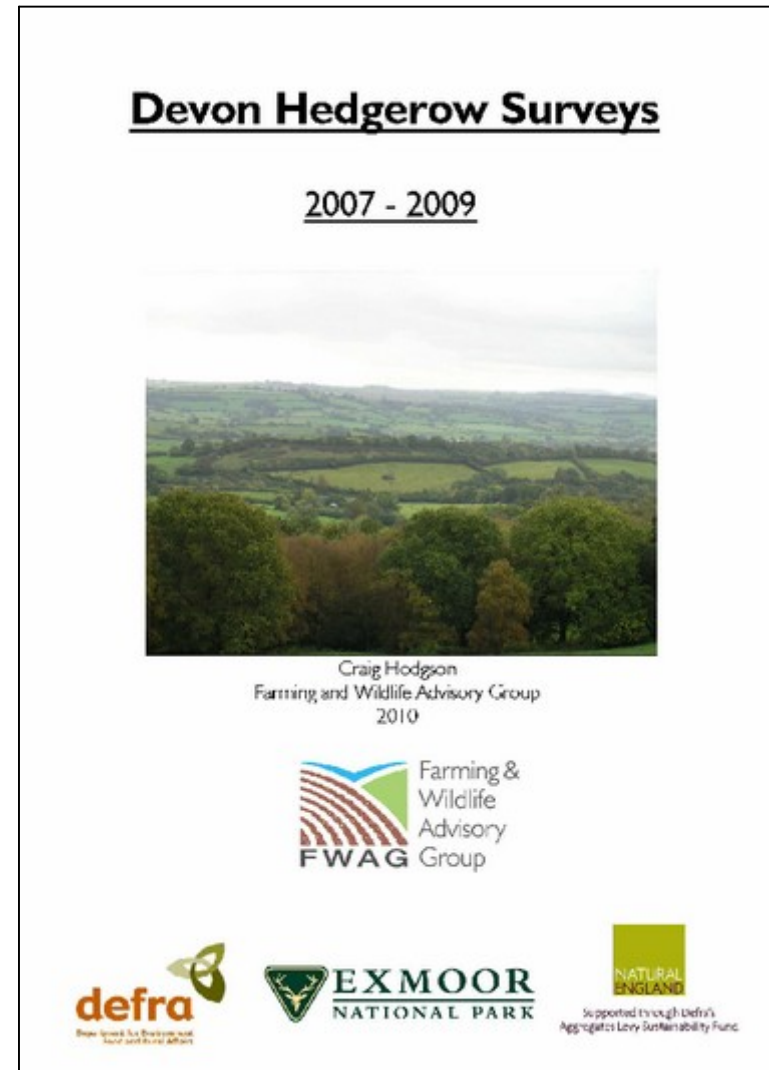
Rob Wolton /  
Craig Hodgson



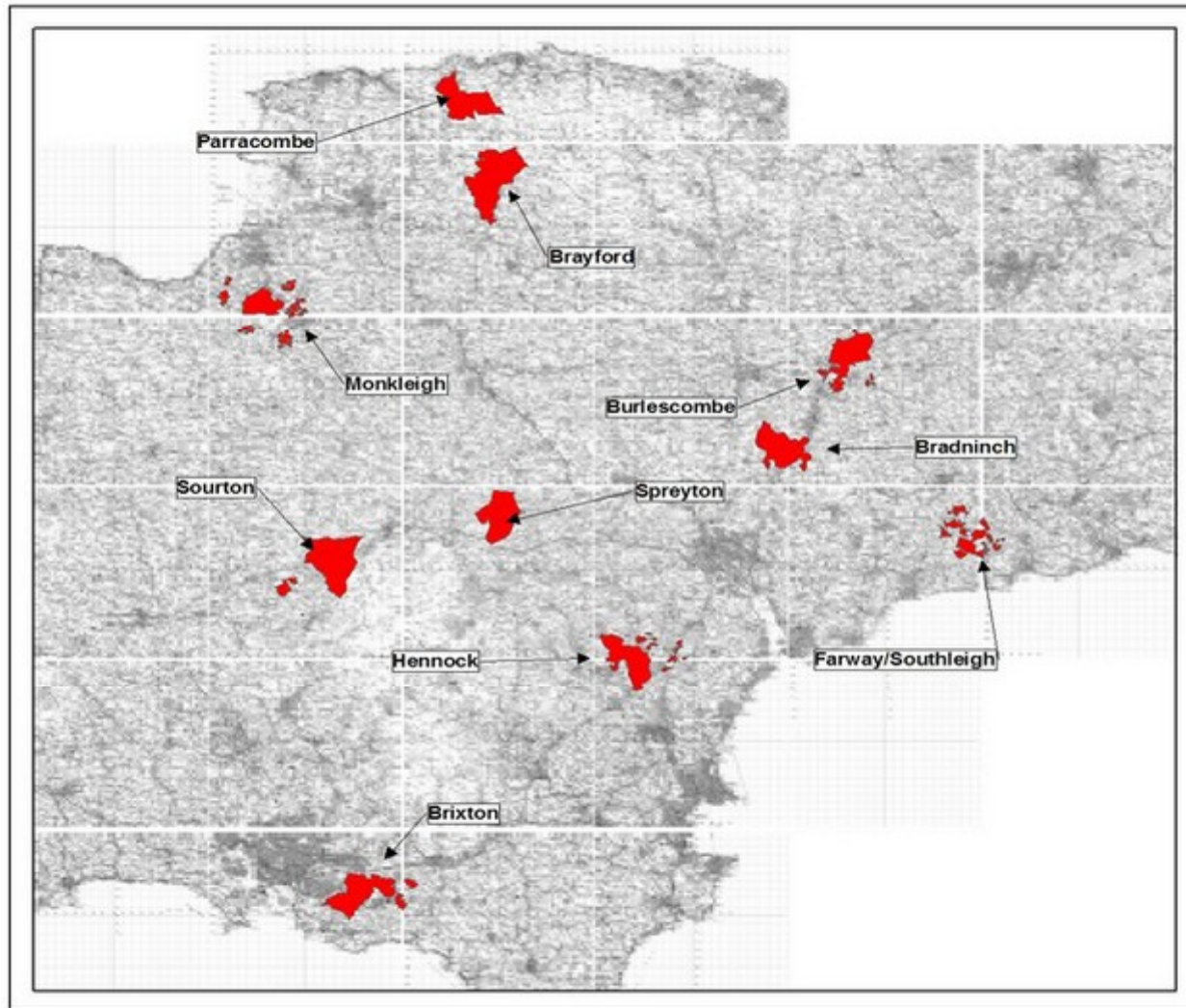
Devon's hedges  
The best in the world!

# Surveys

- Between 2007 and 2009 ten parishes surveyed in Devon (9 by Devon FWAG, 1 by Exmoor National Park)
- Hedges sampled at random to give true representation of Devon's hedges
- 1,308 hedges surveyed
- Data compared with 20 surveys carried out across England
- All used standard Defra/Hedgeline procedure




# Parishes surveyed in Devon 2007-9



## Devon Hedgerow Surveys 2007 - 2009

### Legend

 Survey Area



Author: Craig Hodgson

Date: 19-02-2010

Map Reference: Devon Hedgerow Surveys

0 2,400 4,800 9,600 meters

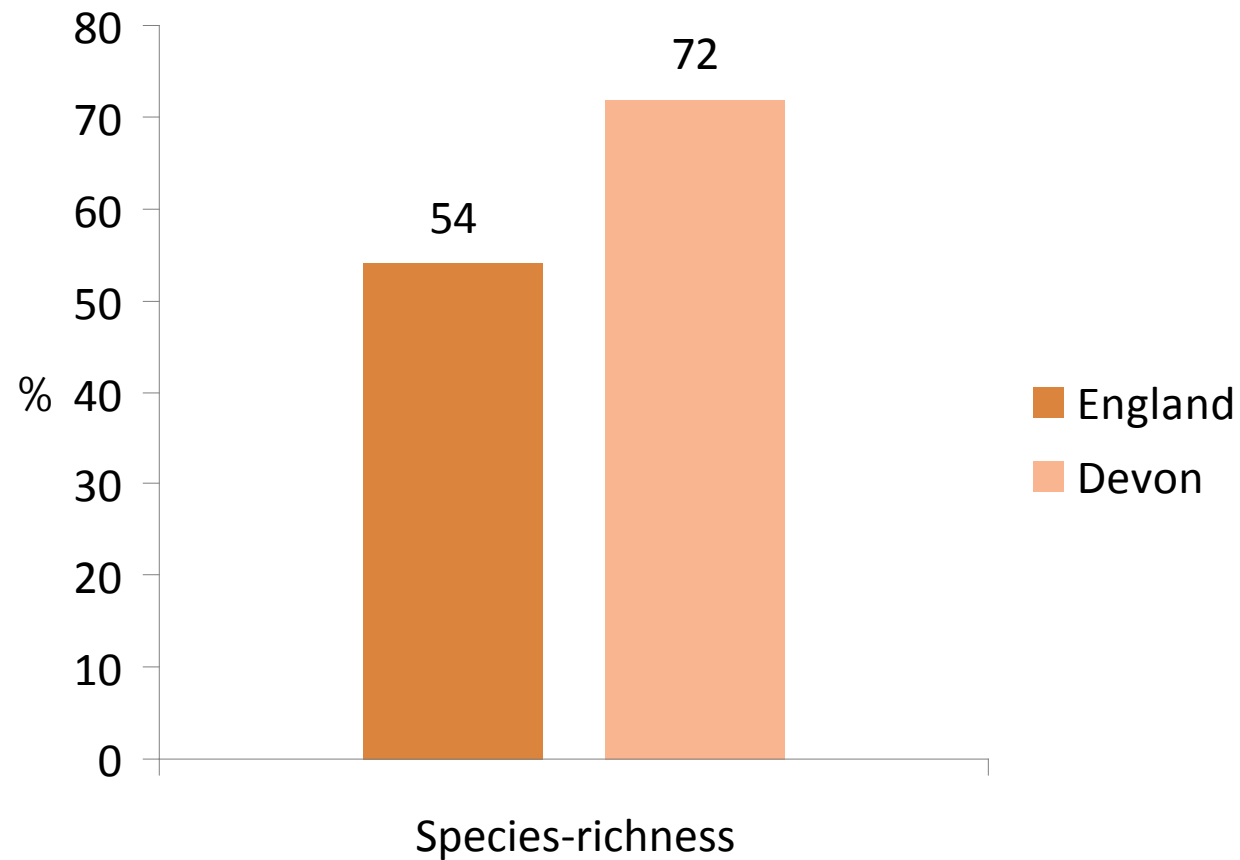
Scale: 1:600,000

Devon FWAG  
Agriculture House  
Pyres Hill  
Rydon Lane  
Exeter  
EX2 5ST

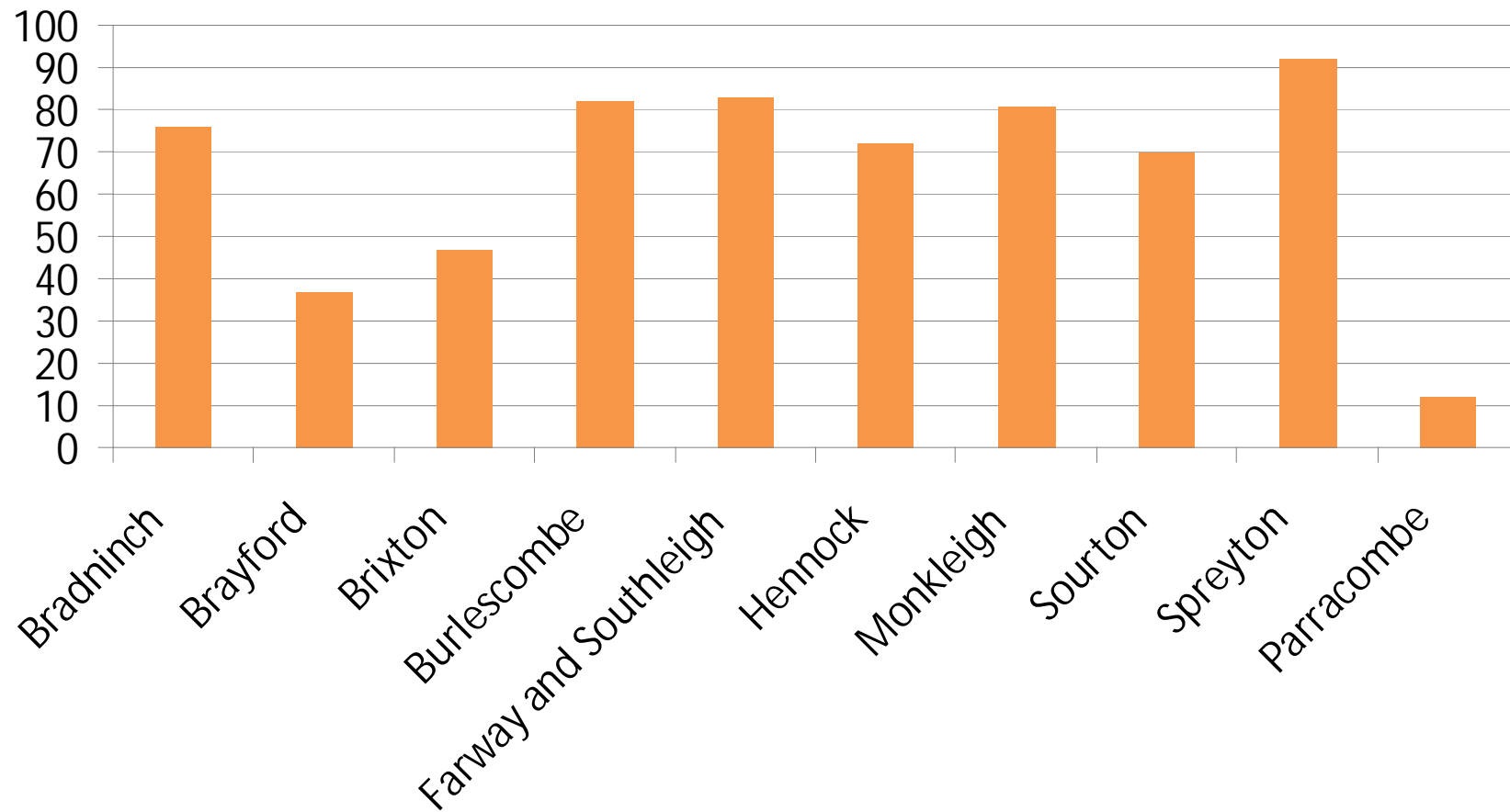


Reproduced by permission of Ordnance Survey on behalf of HMSO. © Crown copyright and database right 2009. All rights reserved. Ordnance Survey Licence number 100022021.

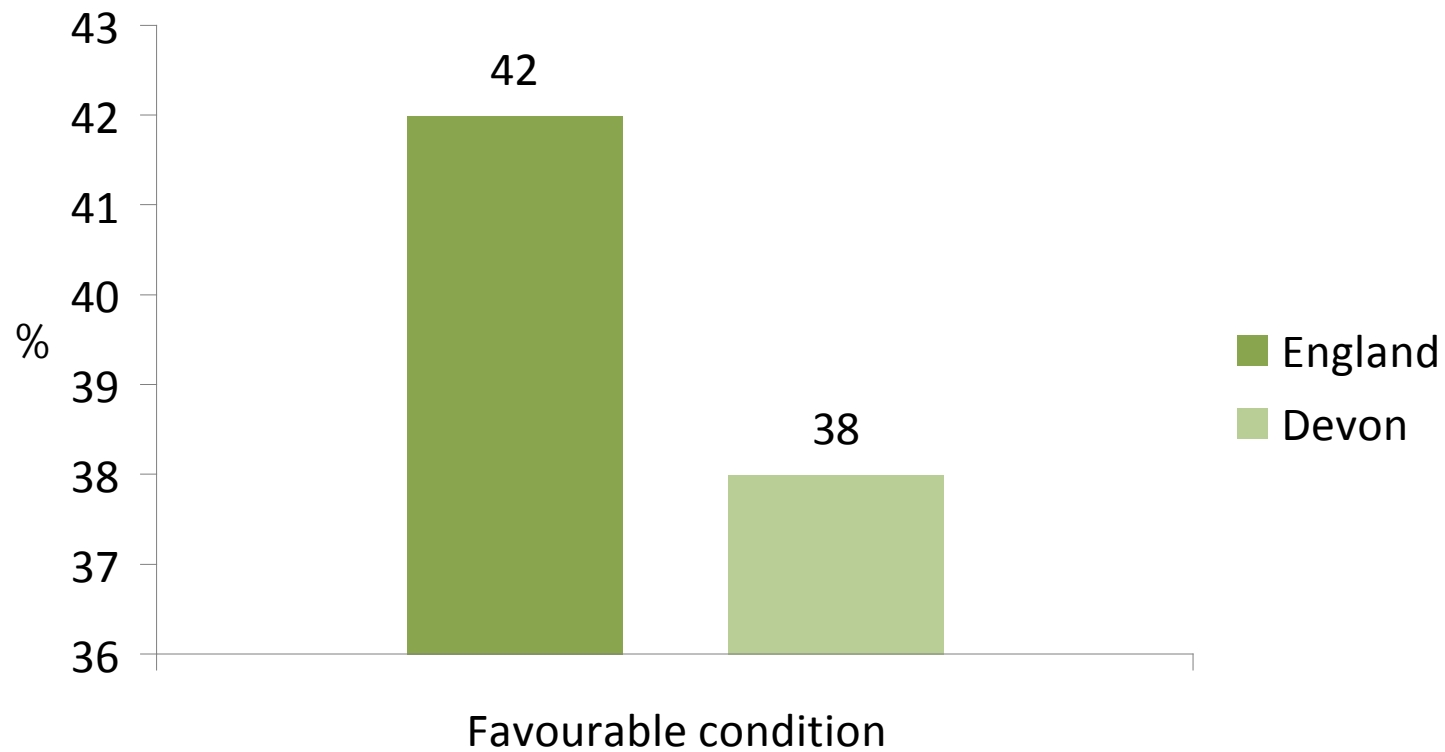
# How do Devon's hedges compare with rest of England?



# Variation in % of species-rich hedges between parishes



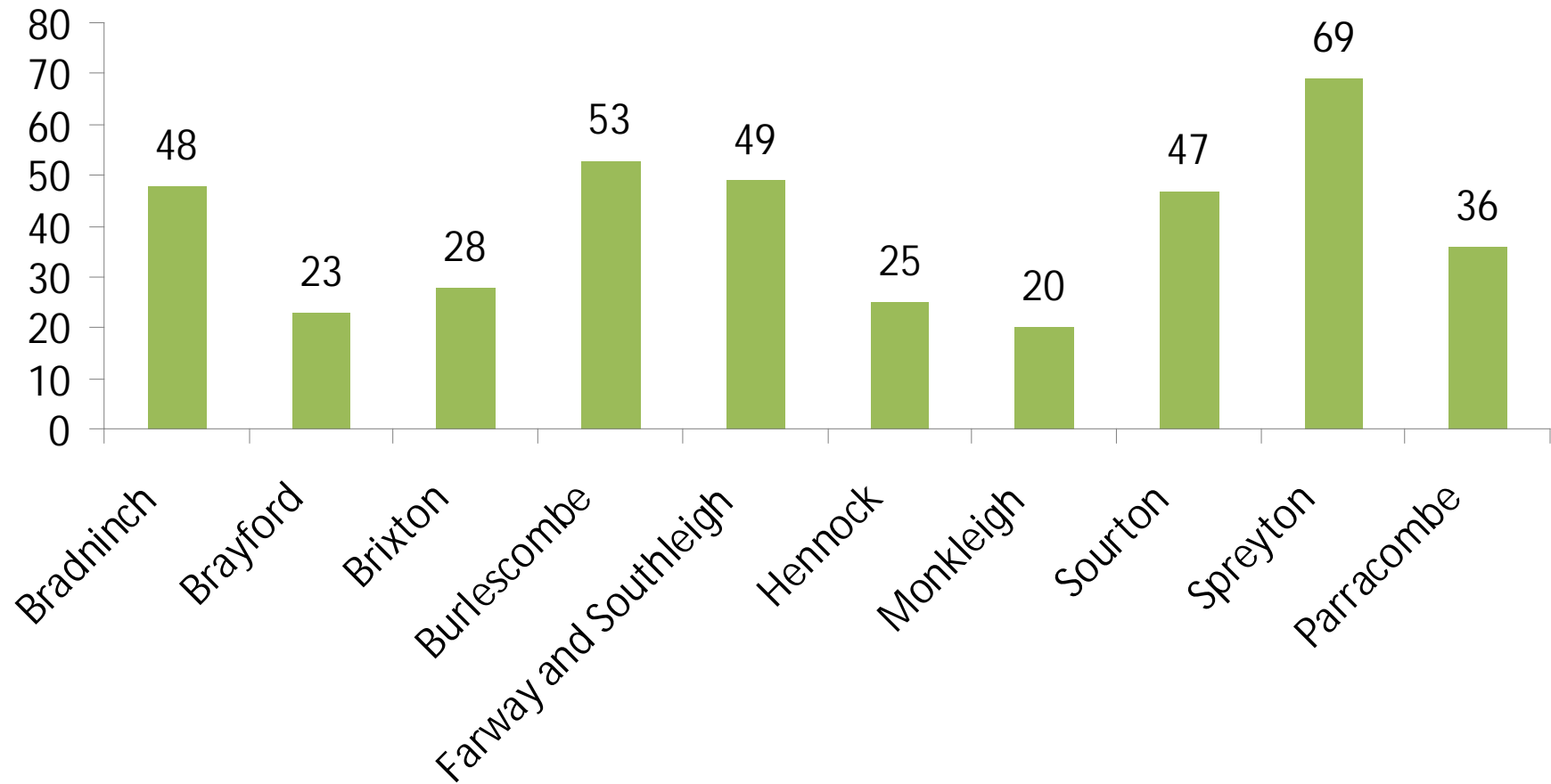
# How does the condition of Devon's hedges compare with the rest of England?



# Hedgerows are scored against 5 condition thresholds

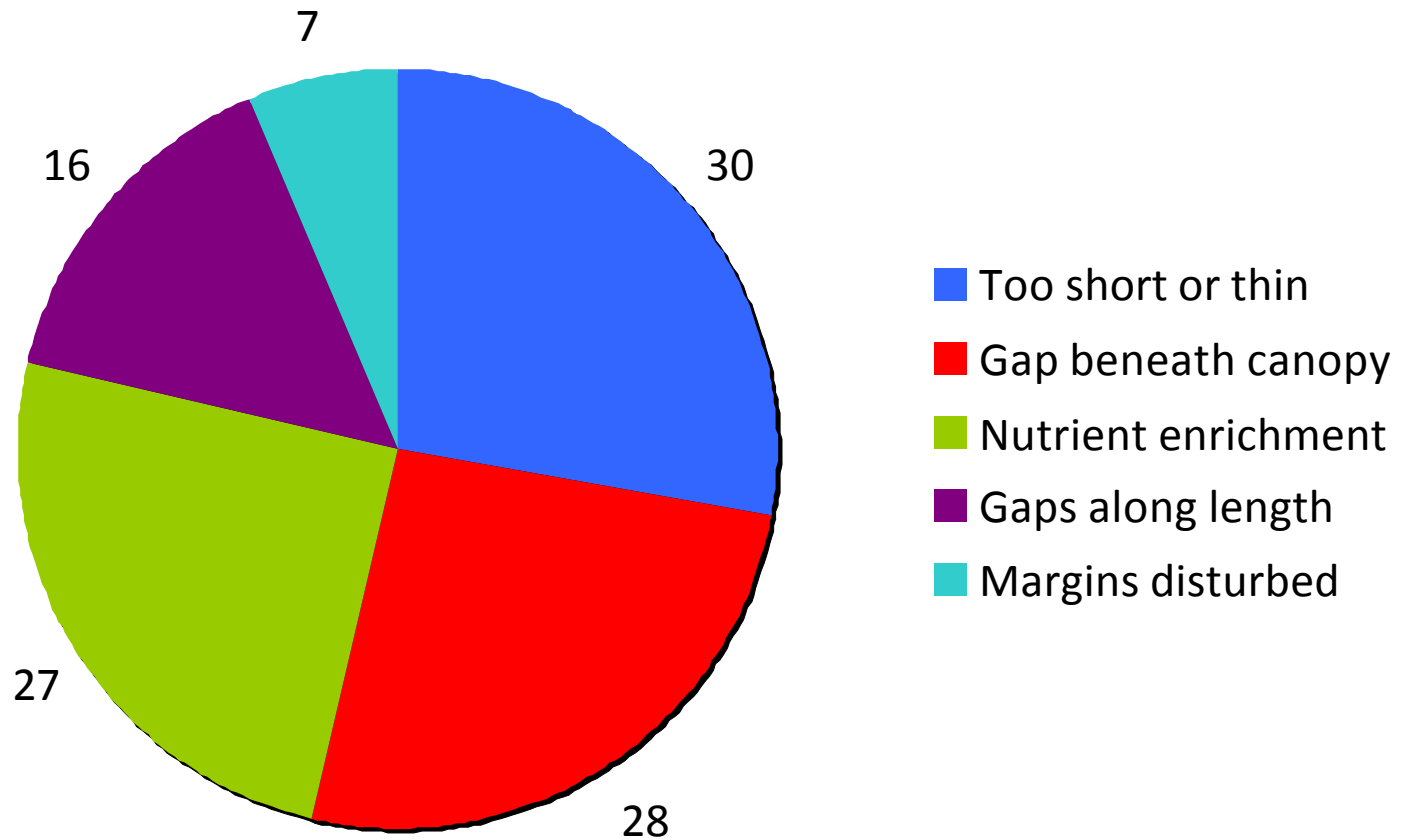
- **Undisturbed ground and perennial herbaceous vegetation cover:** at least 2m of undisturbed ground and 1m of herbaceous vegetation cover from the hedge centre line.
- **Nutrient enrichment:** less than 20% cover combined of nettles, cleavers and docks.
- **Recently introduced non native species:** Non native herbaceous species (maximum 10%), non native woody species (maximum 10%).
- **Size:** at least 1m high, at least 1.5m wide, at least 3m<sup>2</sup> cross-sectional area.
- **Integrity/continuity:** less than 10% gaps, no gaps greater than 5m, base of canopy less than 0.5m above ground.

# Variation in condition between parishes

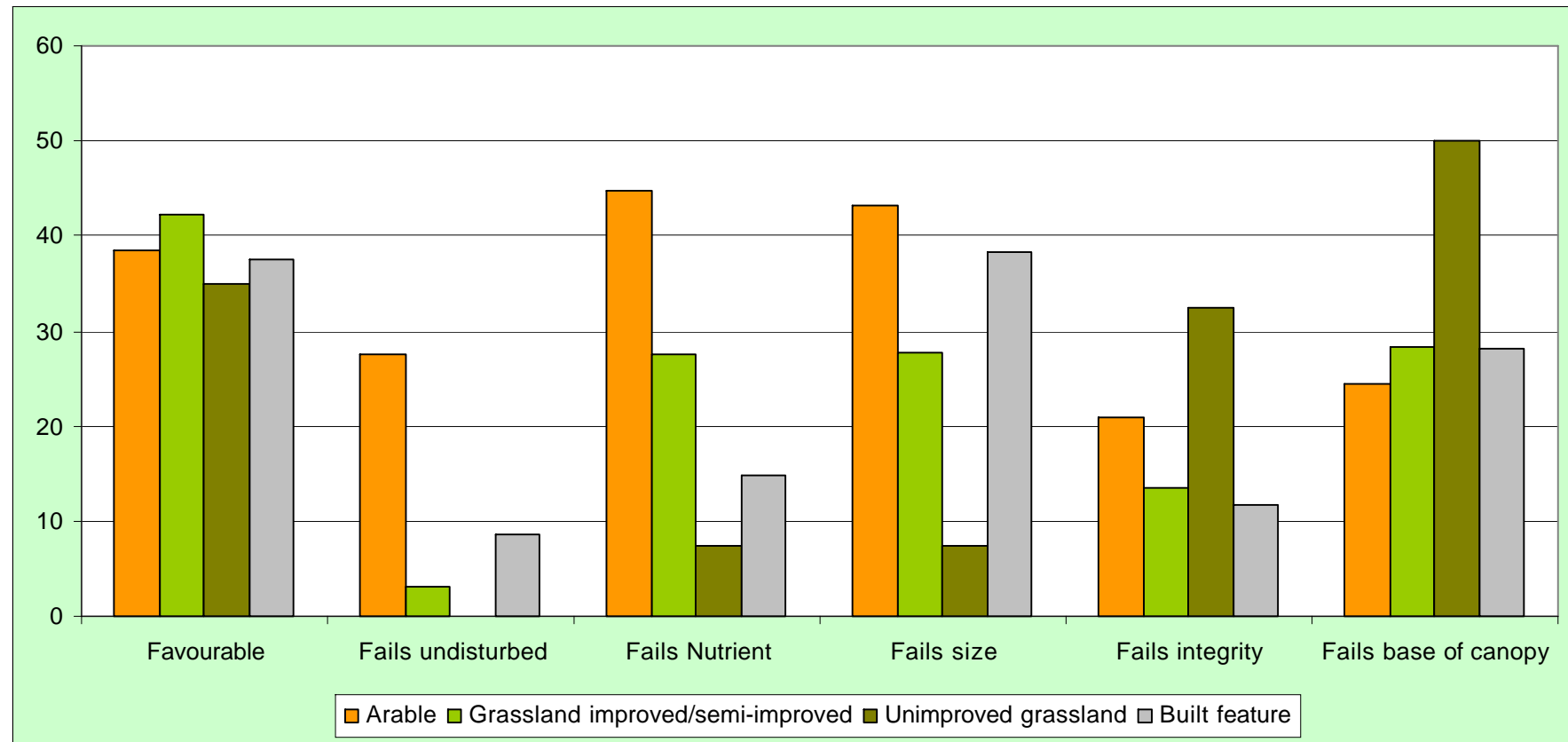




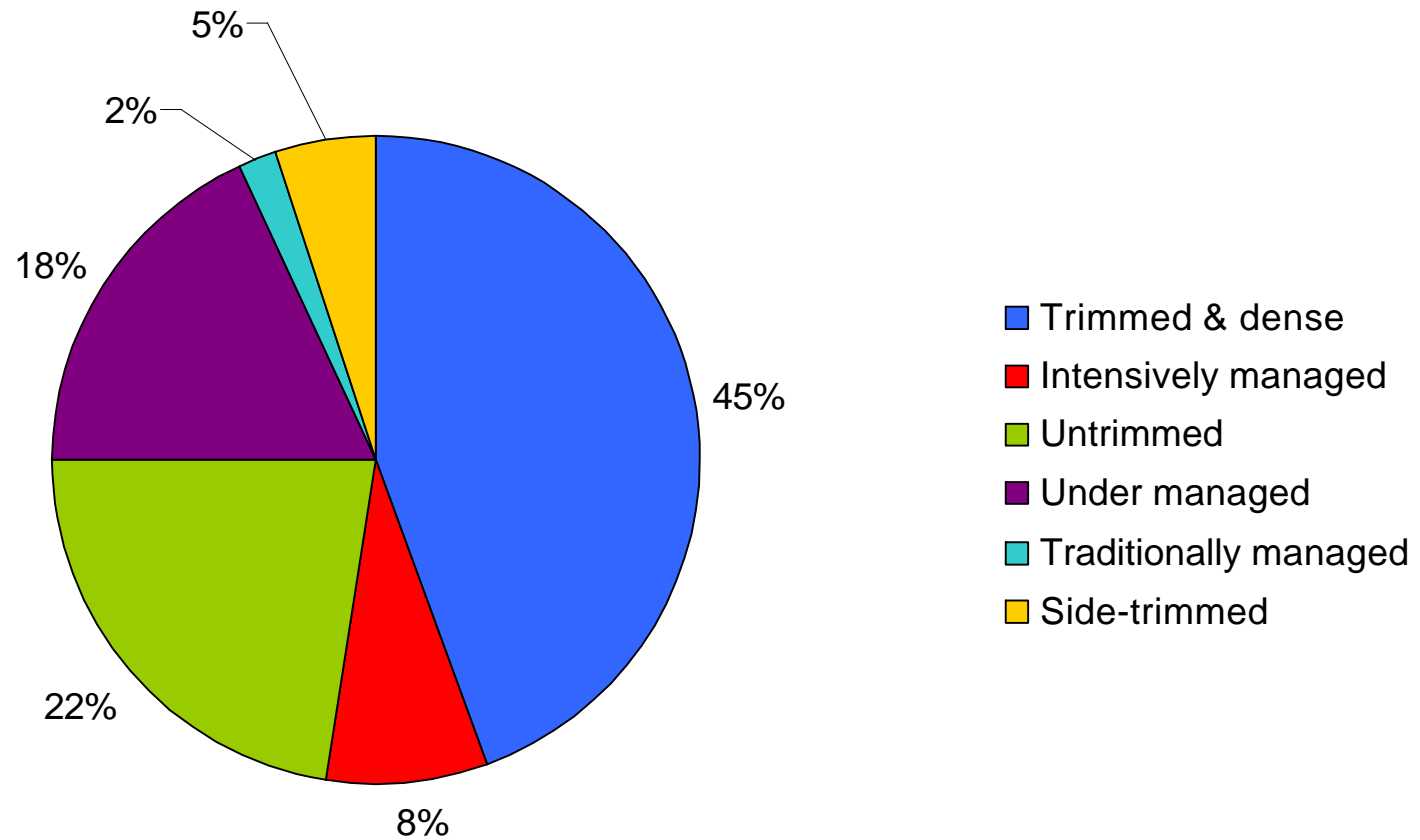
# Reasons for poor condition of Devon's hedges



# Does adjacent land use affect hedgerow condition?



# Current management



# What most needs to be done?

Rejuvenate more hedges  
by laying or coppicing

Currently only 1% of hedges  
being rejuvenated each  
year – need 2.5%  
(assuming 40 year  
management cycle)



# What next needs to be done?

Re-establish flower-rich  
banks and margins



# What else needs to be done?

Improve cutting or trimming management:

- ✓ Fewer hedges cut every year
- ✓ Fewer hedges not cut at all!
- ✓ But some allowed to grow-up before laying



# And, we desperately need to

Recruit new hedgerow trees

- A stable hedgerow tree population requires 45% of trees to be less than 20 cm across (DBH)
- Nationally, only 19% of trees are in this size category
- In Devon 25-28% of our trees – still far too few
- Trees can be planted, or natural re-growth or saplings protected



# The best in the world

